

---

## Between the Lions May 2026

1 message

---

Lions NZ Head Office <md202.secretary@lionsclubs.org.nz>  
Reply-To: Lions NZ Head Office <md202.secretary@lionsclubs.org.nz>  
To: Kimberley <secretary.rangiora@lionsclubs.org.nz>

29 May 2026 at 15:19



BETWEEN THE LIONS

May 2026

---

# Welcome from your Council Chair

Read CC Pam Harvey's  
Welcome

Read the executive  
summary of the April COG  
meeting [HERE](#)

## ★ Highlight

### Nationwide Social Media Campaign



‘Lions Keeping New Zealand Warm’

Social Media Campaign

If your Club has a project that 'warms NZ',  
(firewood, knitting, soup, food collection/distribution etc)  
please let head office know and send a photo and a story!!

## Stories & Information

**Good News!**  
**EARLY BIRD REGISTRATION  
EXTENDED  
UNTIL END OF MAY!**

- ✓ An exciting programme coming together
- ✓ Inspiring speakers
- ✓ Interactive sessions
- ✓ Leadership ideas
- ✓ Networking opportunities
- ✓ Innovation • Inclusion • Impact

**SEATS ARE FILLING QUICKLY!**

**ANZI PACIFIC FORUM 2026**  
*Tāmaki Makaurau*  
**Auckland**  
NEW ZEALAND  
**21-23 AUGUST 2026**

*Don't miss out!* ➔ **REGISTER NOW**  
and secure your place  
at the best rate!

**BE PART OF THE LIONS of tomorrow!**

*See you in Auckland!*

[www.lionsanzipacificforum.com](http://www.lionsanzipacificforum.com)

There is still time to register!



Read the latest May  
Diabetes NZ Newsletter!



Men's Health Week 15-21  
June.. What's your health  
score? Click this textbox to  
take a quick test!

## Our Clubs in action

# Honouring KINDNESS & COMMUNITY

It was an honour and a privilege for a group of us to visit Bidy's Barn this morning to present Caroline Dore and The Nattering Knitter team with a **Lloyd Morgan Lions Clubs Charitable Trust Honoured Recognition award**.



This amazing group has over the years made and donated **9318 hug rugs** to people in need of a little warmth and kindness.



**But their work doesn't stop there.** They also knit or crochet garments for Plunket, neo-natal hospital units, Hospice and many other deserving organisations.



They receive gifts of wool from all around the world which they then turn into rugs or clothing with love and kindness.



*Our club, Lions-Gore River Valley, is proud to honour this amazing group in this way....*



**Lions-Gore River Valley**

*We Serve*



Lions Clubs District 202F | Lions Clubs New Zealand 

## Lions Eye Health Program



Another great day making an impact through the Lions Eye Health Programme!

The amazing LEHP team had the privilege of screening students at Hawera Christian School.

A huge thank you to the school, staff, students, and caregivers for the warm welcome and support throughout the day.

Early detection is so important, and through these screenings we are helping identify children who may require further eye testing — giving them the best possible opportunity to succeed both in the classroom and beyond.

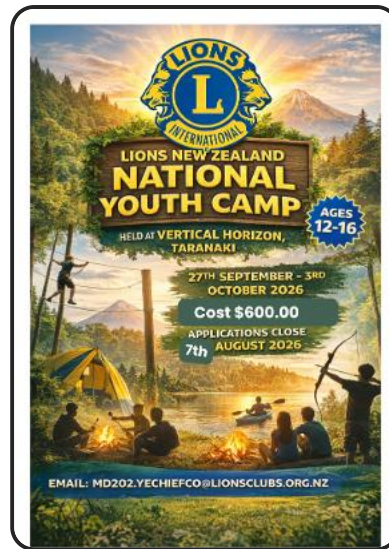
Did you know that around 1 in 5 children screened may be referred for further assessment? That's why programmes like LEHP are making such a difference in communities across New Zealand.

A massive thank you also goes to our volunteer screeners and supporting Lions clubs who continue to give their time to help improve children's vision and wellbeing.



WE ARE STILL IN NEED OF  
A COORDINATOR FOR  
JAPAN!!

Click here for  
more information on the  
Youth Exchange Coordinator  
Vacant Position



**2026 Youth Camp!**

[Download the Poster here](#)

[Read more details about  
Camp](#)

## ★ Notes from the Treasurer



Your membership fees are safe. Your tax threshold just got bigger!

This year's Government Budget included two announcements that matter for Lions Clubs as incorporated societies, and both are good news.

**The tax-free threshold rises from \$1,000 to \$10,000**

A club may currently owe income tax once net income in the incorporated

society passes \$1,000 in a year. From 1 July 2027, the start of the 2028 income tax year, that threshold rises to \$10,000.

Clubs that remain under the new threshold will also no longer be required to file an income tax return at all.

Community project fundraising, which sits in your Charitable Trust, is already tax-exempt and is not affected by this change.

**Membership subscriptions and levies stay non-taxable**

The Budget confirmed that membership subscriptions and levies remain nontaxable.

It is worth being clear on what this covers: the protection applies to subscriptions and levies only.

Trading income generated through member activities does not fall within this exemption and remains taxable in the usual way, though it does count toward the \$10,000 net income threshold.

**What does this mean for your club?**

Check your incorporated society net income against the \$10,000 threshold. If your club is likely to stay under it, you may be able to stop filing an income tax return from 1 July 2027. I will be in touch with more detail ahead of that date.

Kind regards,

Susi Hipp

MD202 Treasurer

**★ Financial Mentoring  
Services Collaboration**

## Working Together to Support Communities

### What's the idea?

A simple, voluntary relationship between local Lions Clubs and Financial Mentoring Services (budget advisory services).

### How it works:

- Financial mentoring services refer vetted clients with practical needs to their local Lions Club.
- Lions Clubs decide whether to accept or decline each referral.
- Typical needs may include:
  - sourcing second-hand furniture or appliances
  - providing transport or moving help
  - small items or services not covered elsewhere
- If payment is needed, a financial mentor helps the client budget and organise it.

Why it matters and contact details: **KEEP READING..**

# ★ Club Charitable Trust Deed

## Notification from Legal Counsel Alan Knowsley.

All Trusts registered as Charities need to carry out a review of their deed and governance processes every three years to ensure they are fit for purpose.

INSTRUCTIONS on how to adopt the new Trust Deed

District Trust Deed Review

Click [THIS LINK](#) to Download the NEW Trust Deed

---



## CLUB BANKING INSTRUCTIONS FOR LCI AND MD202

### To pay for

**International Dues – LCIF Donations – Lions Share Pins –  
MJF or Life Membership Applications – Supplies bought from America**

### Please Use

**Westpac, International Assoc of Lions 03-0502-0081103-00**

Please use the below codes & references to identify your payments

#### **International Dues:**

PARTICULARS: Club Name  
CODE: Club Number  
REFERENCE: Dues

#### **Payment for Club Supplies from America:**

PARTICULARS: Club Name  
CODE: Club Number  
REFERENCE: Invoice Number

#### **LCIF Donation from CLUB:**

PARTICULARS: Club Name  
CODE: Club Number  
REFERENCE: LCIF DR (Disaster Relief)  
**or**  
LCIF DR (Specific Event i.e. Ukraine) **or**  
LCIF ES (Empowering Service)

#### **Payment for Lions Share Pin:**

PARTICULARS: Member Name  
CODE: Recipient Member Number  
REFERENCE: LShare  
(This is a personal donation to LCIF,  
for which you will receive a pin)  
There are three levels of donation; bronze,  
silver and gold, each with a different pin.

#### **LCIF Donation from INDIVIDUAL:**

PARTICULARS: Member Name  
CODE: Member Number  
REFERENCE: LCIF DR (Disaster Relief)  
**or**  
LCIF DR (Specific Event i.e. Ukraine) **or**  
LCIF ES (Empowering Service)

#### **Payment for MJF or**

#### **Life Membership Application:**

PARTICULARS: Club Name  
CODE: Recipient Member Number  
REFERENCE: MJF **or** LIFE MBR

### To pay for

**Club Supplies bought from Head Office in NZ**

### Please Use

**Westpac, New Zealand Lions MD202 | 03-0558-0252696-00**

PARTICULARS: Club Name  
CODE: Club Number  
REFERENCE: Invoice Number

### Heads up for June

**June is Bowel Cancer Awareness AND Migraine Awareness Month**

**Important Dates:**

- **1 June Kings Birthday**
- **14-20 June National Volunteer Week**
- **15-21 June Men's Health Week**
- **21 June Winter Solstice - Shortest Day**



[www.lionsclubs.org.nz](http://www.lionsclubs.org.nz)

[office@lionsclubs.org.nz](mailto:office@lionsclubs.org.nz)

09 422 2021

copyright Lions Clubs of New Zealand & Islands of the South Pacific

[update your preferences](#) or [unsubscribe](#)